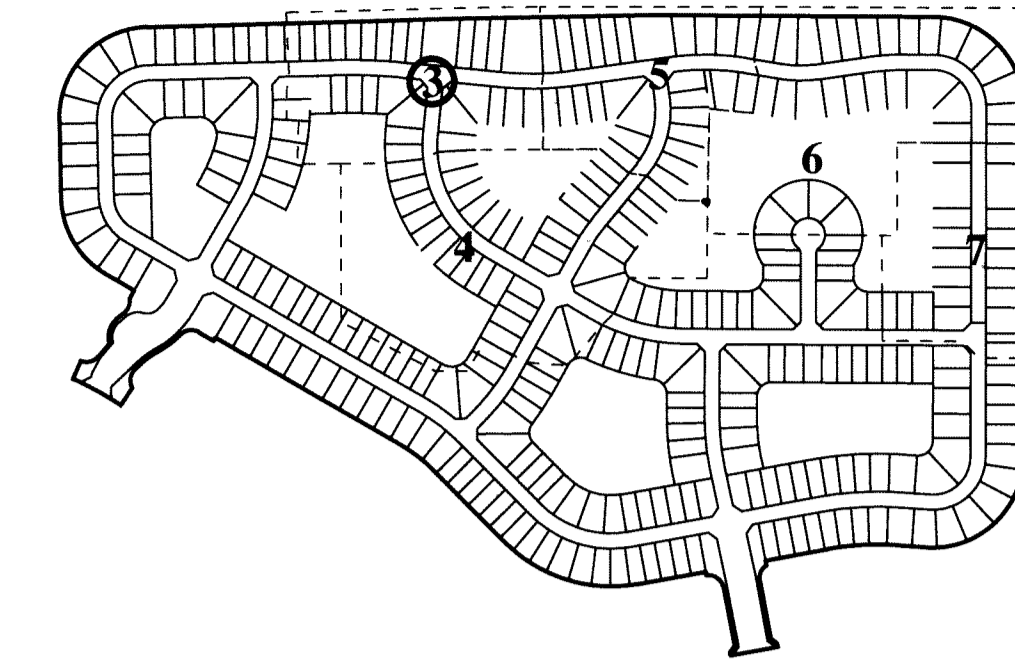


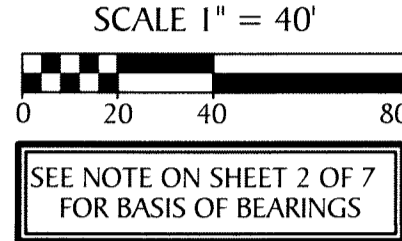
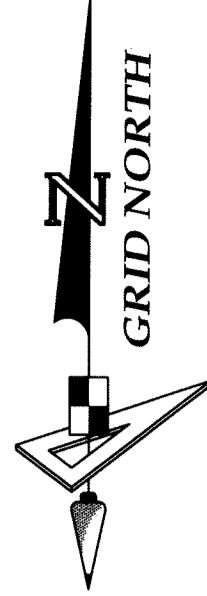
# HAMMOCKS OF WESTLAKE - PHASE II

BEING A REPLAT OF TRACTS "Q-2", O.S.T. #8 AND O.S.T. #9 OF HAMMOCKS OF WESTLAKE PER PLAT BOOK 124, PAGES 71-81, BEING A PORTION OF SECTION 6, TOWNSHIP 43 SOUTH, RANGE 41 EAST, AND A PORTION OF SECTION 1, TOWNSHIP 43 SOUTH, RANGE 40 EAST, CITY OF WESTLAKE, PALM BEACH COUNTY, FLORIDA

SHEET MAP  
(NOT TO SCALE)

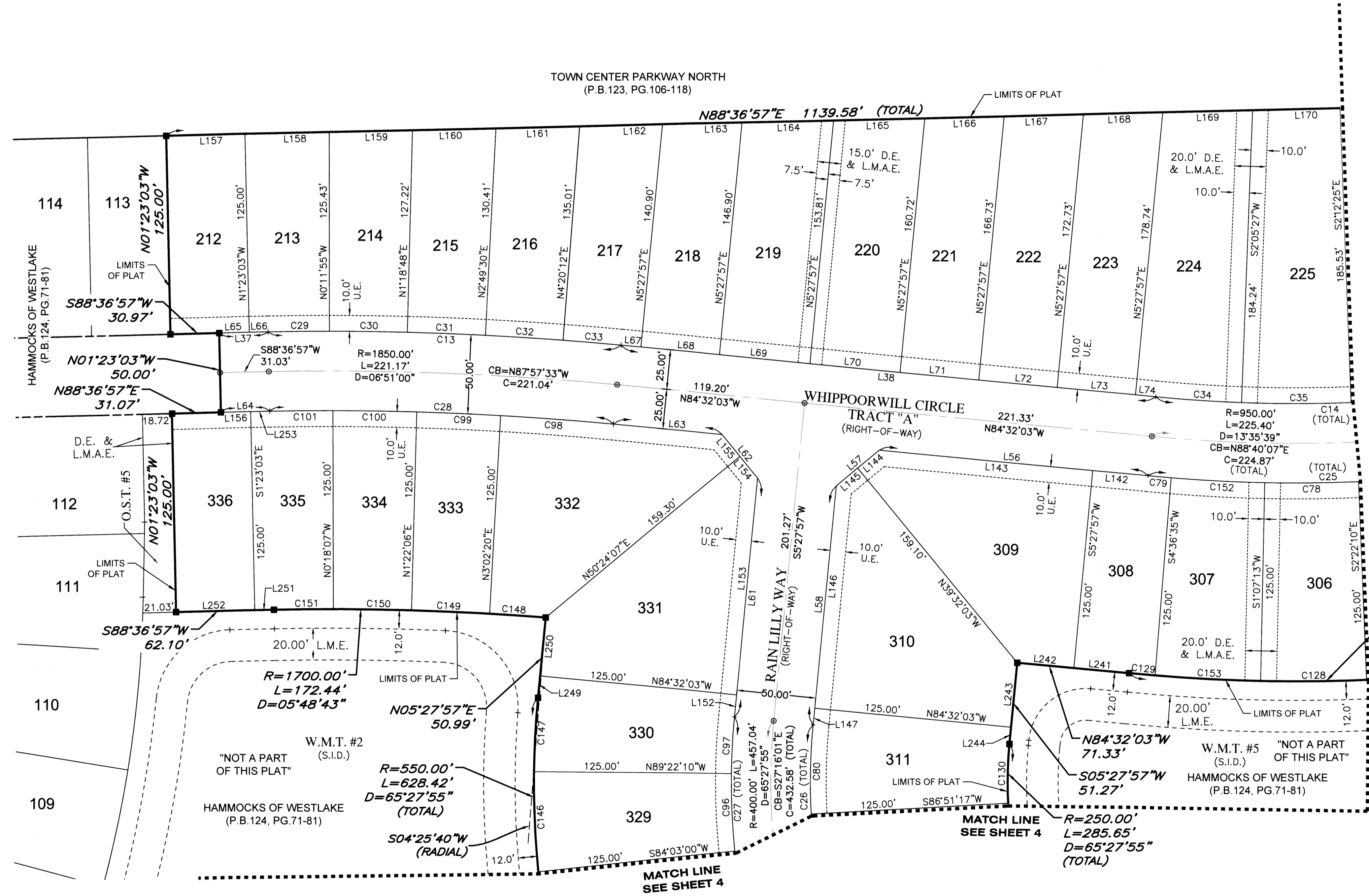


155



- LEGEND:**
- --- Indicates (P.R.M.) Permanent Reference Monument - 4"x4" Concrete Monument LB7768, unless otherwise noted.
  - ⊕ --- Indicates (P.R.M.) Offset Permanent Reference Monument - 4"x4" Concrete Monument LB7768, unless otherwise noted.
  - ⊙ --- Indicates (P.C.P.) Permanent Control Point LB7768
  - P.B.C. --- Palm Beach County
  - P.B. --- Plat Book
  - FCM --- Found Concrete Monument
  - O.R. --- Official Records Book
  - (TYP) --- Typical
  - (RB) --- Radial Bearing
  - (NR) --- Non-Radial line
  - (PR) --- Private Road
  - (U.E.) --- Utility Easement
  - (D.E.) --- Drainage Easement
  - S.I.D. --- Seminole Improvement District

- C --- Curve
- L --- Line
- B.T. --- Buffer Tract
- O.S.T. --- Open Space Tract
- W.M.T. --- Water Management Tract
- L.M.E. --- Lake Maintenance Easement
- L.M.A.E. --- Lake Maintenance Access Easement
- L.A.E. --- Limited Access Easement
- PG. --- Page
- R.T. --- Recreation Tract
- S.I.D. --- Seminole Improvement District
- NAD --- North American Datum
- LB --- Licensed Business
- P.S.M. --- Professional Surveyor and Mapper
- 1/4 --- One Quarter
- R --- Radius
- L --- Arc Length
- D --- Delta-Central Angle
- C --- Chord Length
- CB --- Chord Bearing



LINE DATA TABLE		
NO.	BEARING	LENGTH
L37	S 88°36'57" W	31.03'
L38	N 84°32'03" W	340.53'
L56	S 84°32'03" E	171.33'
L57	N 50°27'57" E	35.36'
L58	N 05°27'57" E	151.27'
L61	N 05°27'57" E	151.27'
L62	N 39°32'03" W	35.36'
L63	N 84°32'03" W	69.20'
L64	S 88°36'57" W	31.03'
L65	S 88°36'57" W	19.03'
L66	S 88°36'57" W	12.00'
L67	N 84°32'03" W	12.65'
L68	N 84°32'03" W	50.00'
L69	N 84°32'03" W	57.50'
L70	N 84°32'03" W	57.50'
L71	N 84°32'03" W	50.00'
L72	N 84°32'03" W	50.00'
L73	N 84°32'03" W	50.00'

LINE DATA TABLE		
NO.	BEARING	LENGTH
L74	N 84°32'03" W	12.88'
L142	S 84°32'03" E	35.29'
L143	S 84°32'03" E	136.04'
L144	N 50°27'57" E	17.68'
L145	N 50°27'57" E	17.68'
L146	N 05°27'57" E	140.79'
L147	N 05°27'57" E	10.48'
L152	N 05°27'57" E	13.94'
L153	N 05°27'57" E	137.32'
L154	N 39°32'03" W	17.66'
L155	N 39°32'03" W	17.70'
L156	S 88°36'57" W	18.93'
L157	N 88°36'57" E	50.00'
L158	N 88°36'57" E	53.39'
L159	N 88°36'57" E	52.83'
L160	N 88°36'57" E	52.94'
L161	N 88°36'57" E	53.19'
L162	N 88°36'57" E	52.64'

LINE DATA TABLE		
NO.	BEARING	LENGTH
L163	N 88°36'57" E	50.36'
L164	N 88°36'57" E	57.91'
L165	N 88°36'57" E	57.91'
L166	N 88°36'57" E	50.36'
L167	N 88°36'57" E	50.36'
L168	N 88°36'57" E	50.36'
L169	N 88°36'57" E	56.90'
L170	N 88°36'57" E	55.52'
L241	N 84°32'03" W	35.29'
L242	N 84°32'03" W	36.04'
L243	S 05°27'57" W	40.79'
L244	S 05°27'57" W	10.48'
L249	N 05°27'57" E	13.94'
L250	N 05°27'57" E	37.05'
L251	S 88°36'57" W	12.10'
L252	S 88°36'57" W	50.00'
L253	S 88°36'57" W	12.10'

CURVE DATA TABLE			
NO.	RADIUS	DELTA	ARC
C13	1875.00'	6°51'00"	224.17'
C14	925.00'	13°35'39"	219.47'
C25	975.00'	13°35'39"	231.33'
C26	375.00'	65°27'55"	428.47'
C27	425.00'	65°27'55"	485.60'
C28	1825.00'	6°51'00"	218.19'
C29	1875.00'	1°11'08"	38.80'
C30	1875.00'	1°30'42"	49.47'
C31	1875.00'	1°30'42"	49.47'
C32	1875.00'	1°30'42"	49.47'
C33	1875.00'	1°07'46"	36.96'
C34	925.00'	3°22'30"	54.49'
C35	925.00'	4°17'52"	69.38'
C78	975.00'	3°29'22"	59.38'
C79	975.00'	0°51'22"	14.57'
C80	375.00'	8°36'40"	56.37'
C96	425.00'	6°34'50"	48.81'

CURVE DATA TABLE			
NO.	RADIUS	DELTA	ARC
C97	425.00'	4°50'07"	35.88'
C98	1825.00'	2°15'18"	71.82'
C99	1825.00'	1°40'13"	53.20'
C100	1825.00'	1°40'12"	53.20'
C101	1825.00'	1°15'18"	39.97'
C128	1100.00'	3°29'22"	67.00'
C129	1100.00'	0°51'22"	16.44'
C130	250.00'	8°36'41"	37.57'
C146	550.00'	6°34'50"	63.17'
C147	550.00'	4°50'07"	46.41'
C148	1700.00'	1°12'15"	35.73'
C149	1700.00'	1°40'12"	49.55'
C150	1700.00'	1°40'12"	49.55'
C151	1700.00'	1°16'04"	37.61'
C152	975.00'	3°29'22"	59.38'
C153	1100.00'	3°29'22"	66.99'